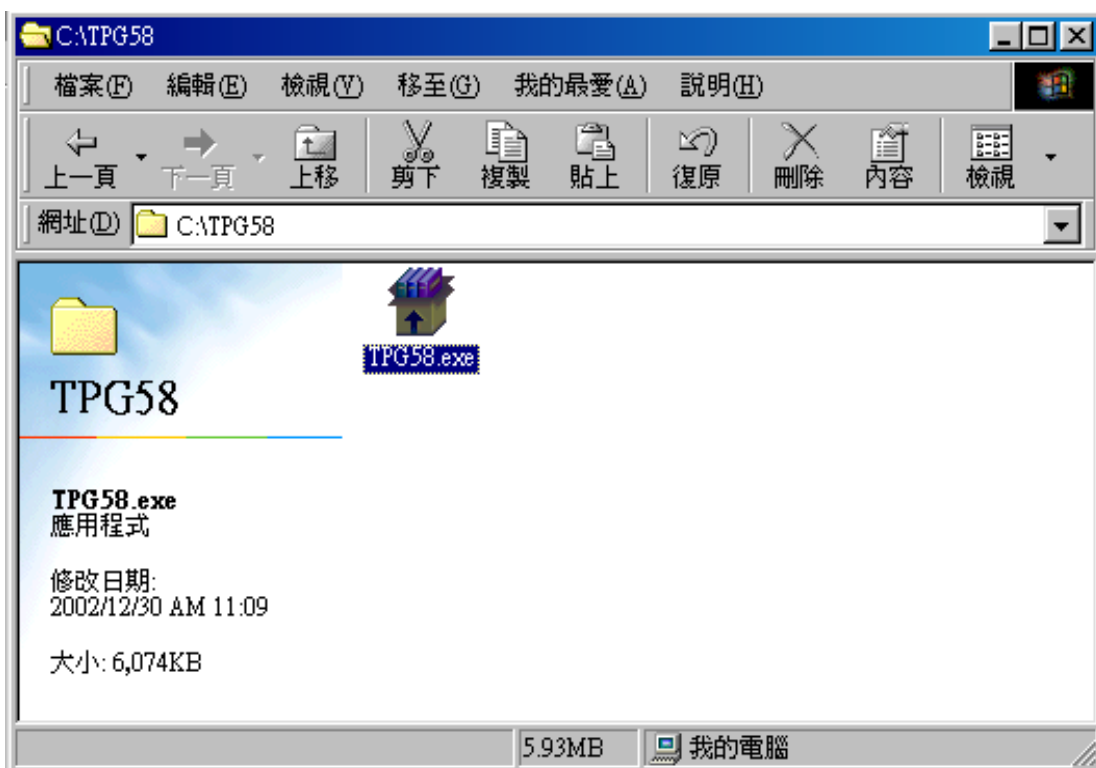
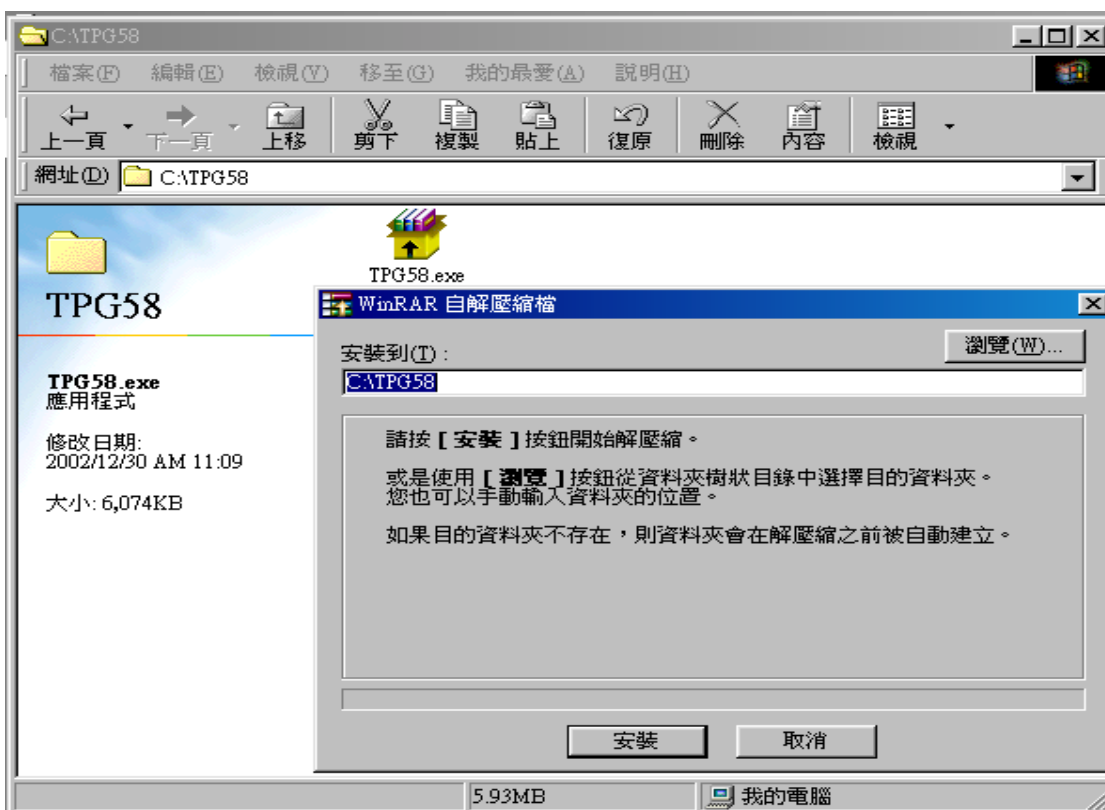


TM58 系列 IC 燒錄流程

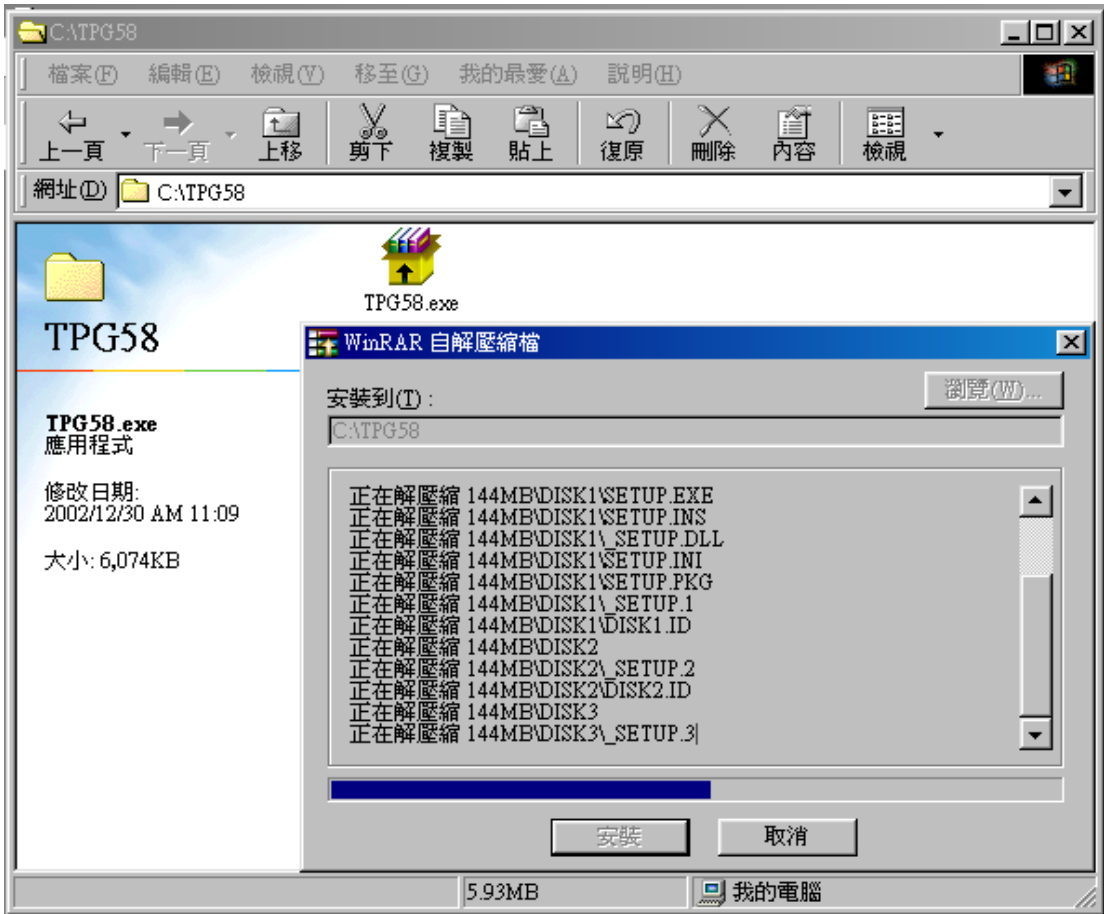
1. 開啟壓縮程式



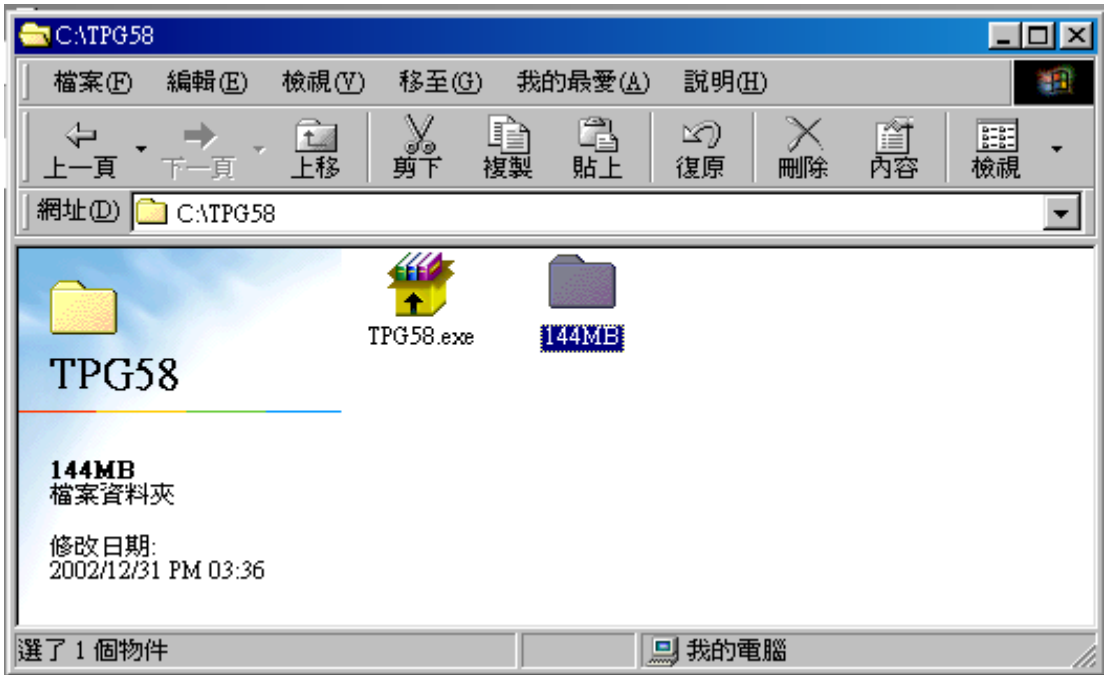
2. 進行解壓縮動作



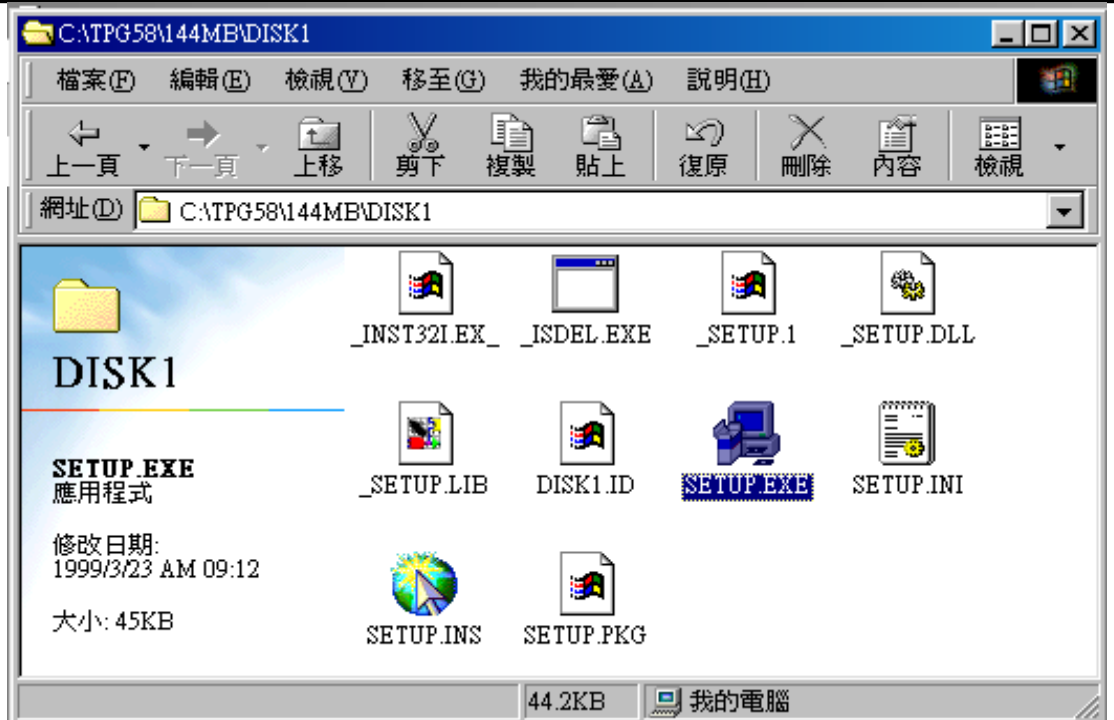
TM58 系列燒錄流程



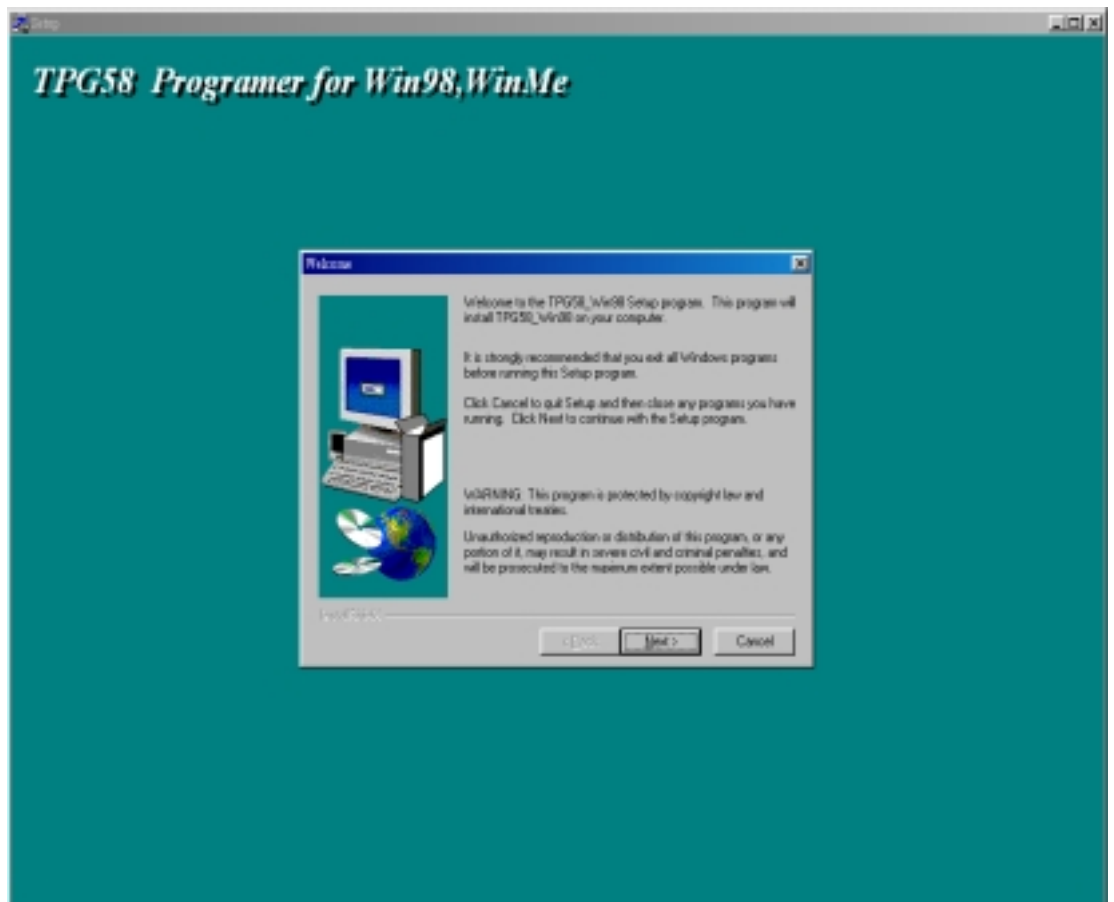
3. 解壓縮完成後，會產生一 144MB 的目錄



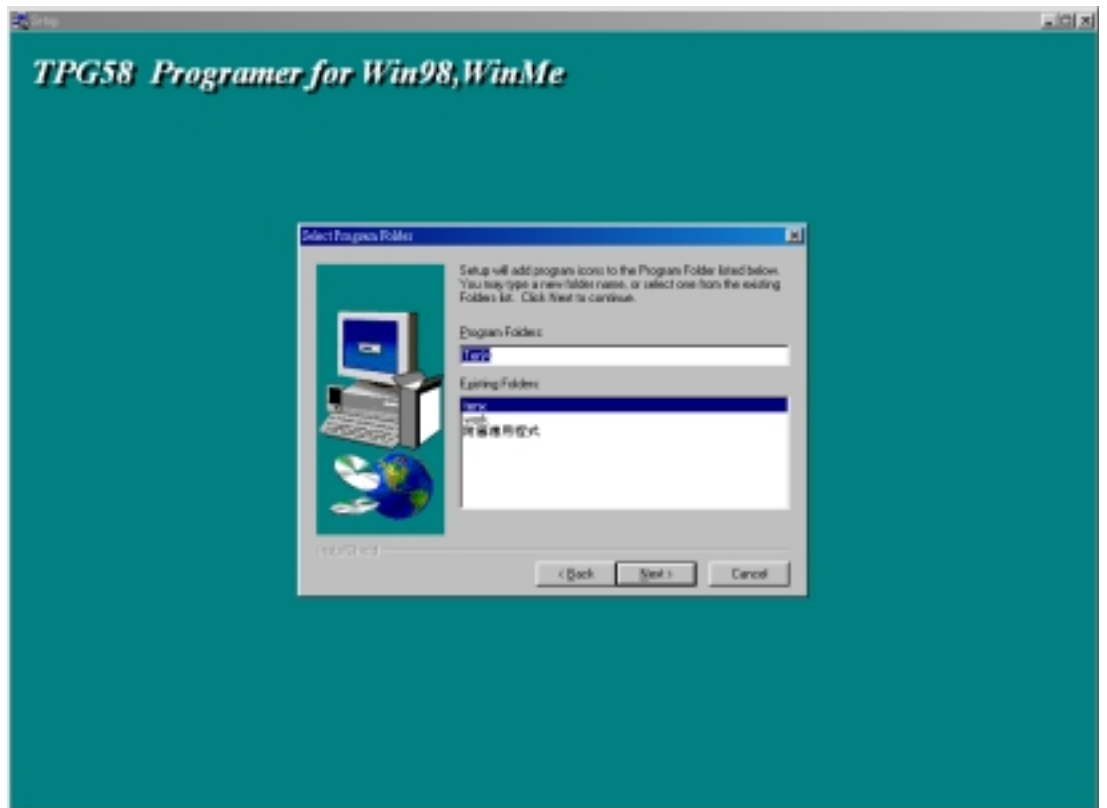
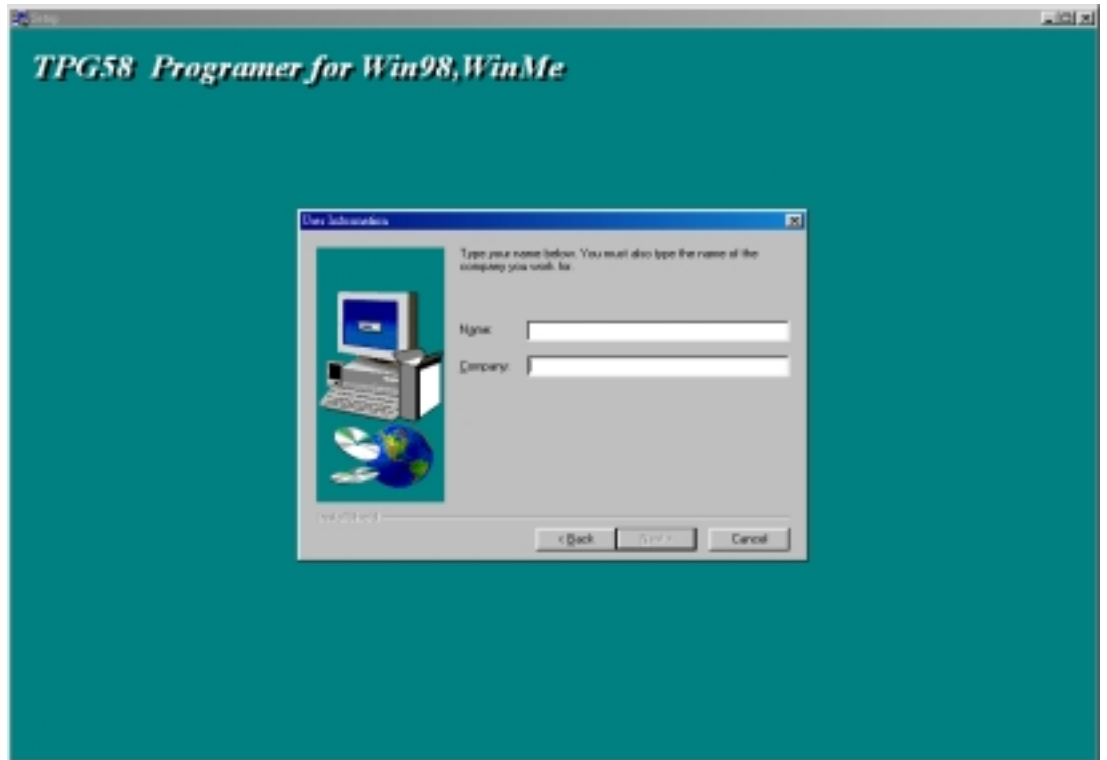
TM58 系列燒錄流程



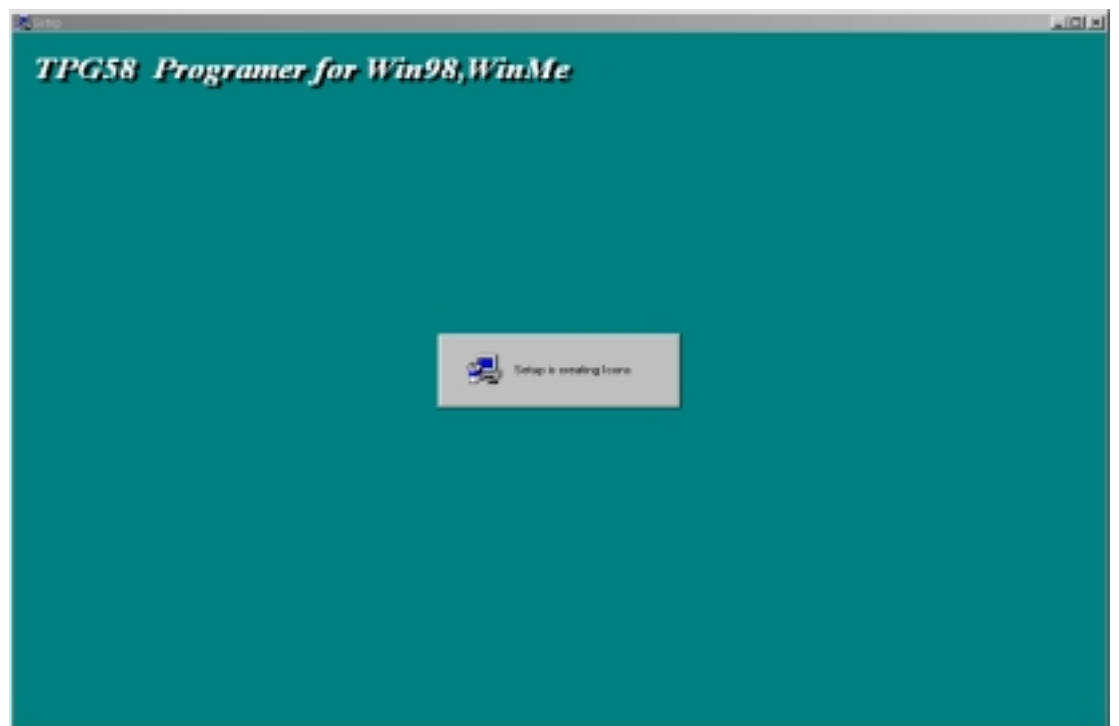
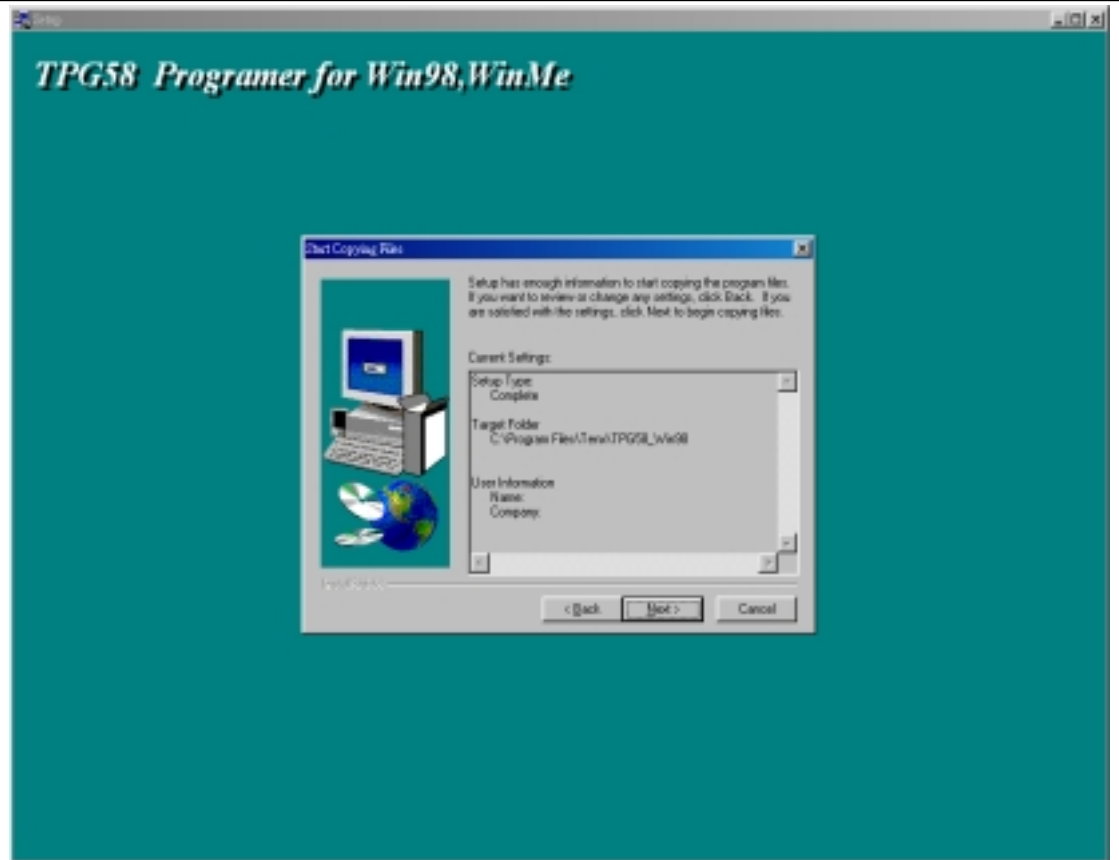
4. 進入 144MB 目錄內的 DISK1 的目錄，執行 SETUP.EXE



TM58 系列燒錄流程



TM58 系列燒錄流程



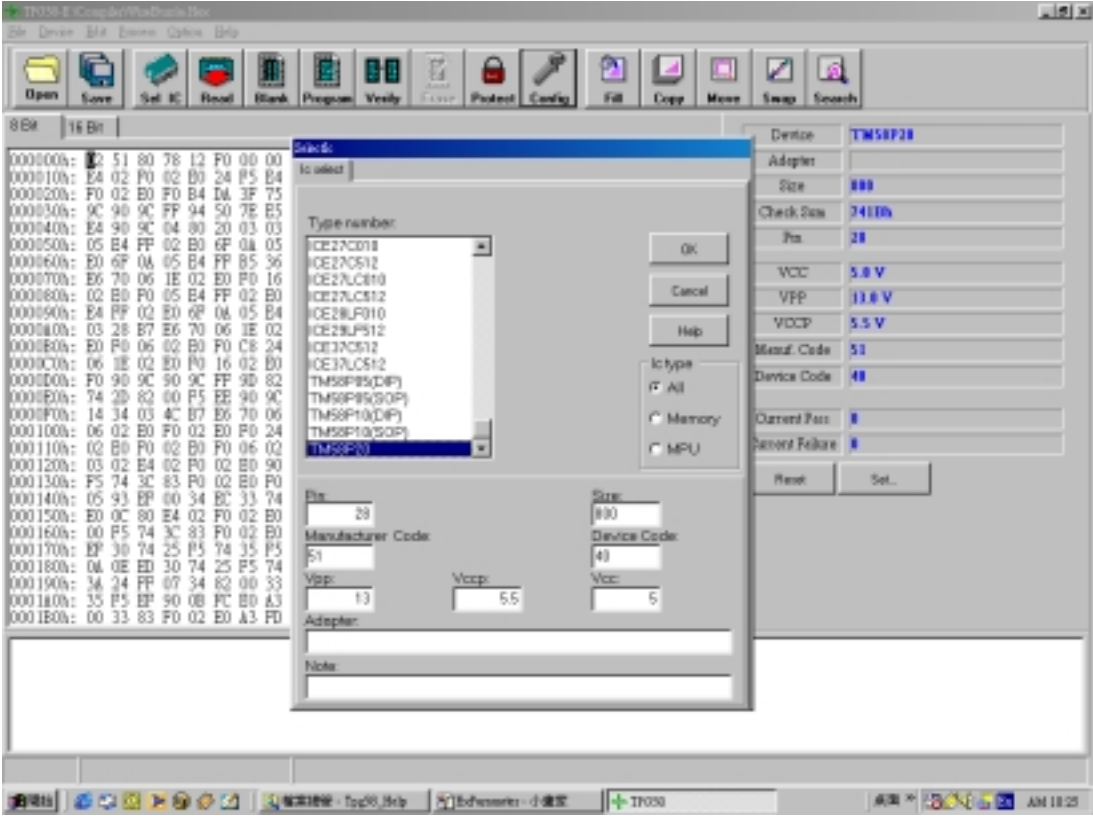
P.S 因各電腦機種問題，在安裝時會 DELAY 一些時間，非當機，請稍等一下

TM58 系列燒錄流程

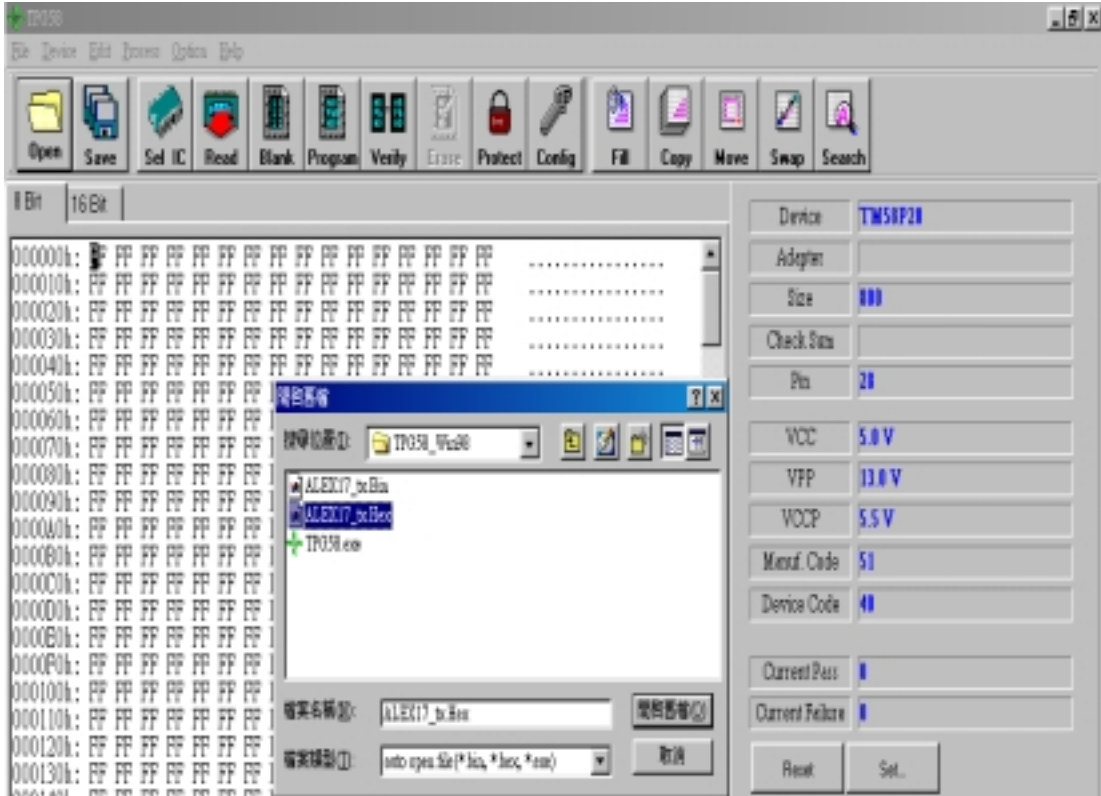
5. 開啟燒錄程式



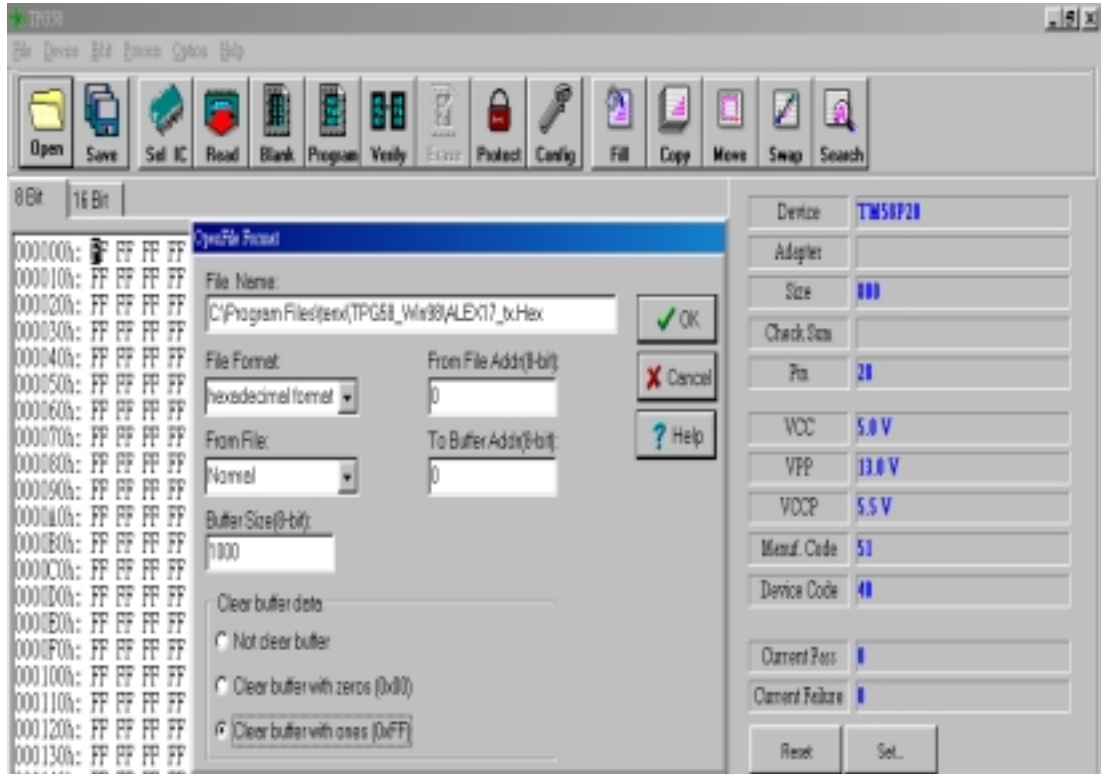
6. 選擇 IC 型號



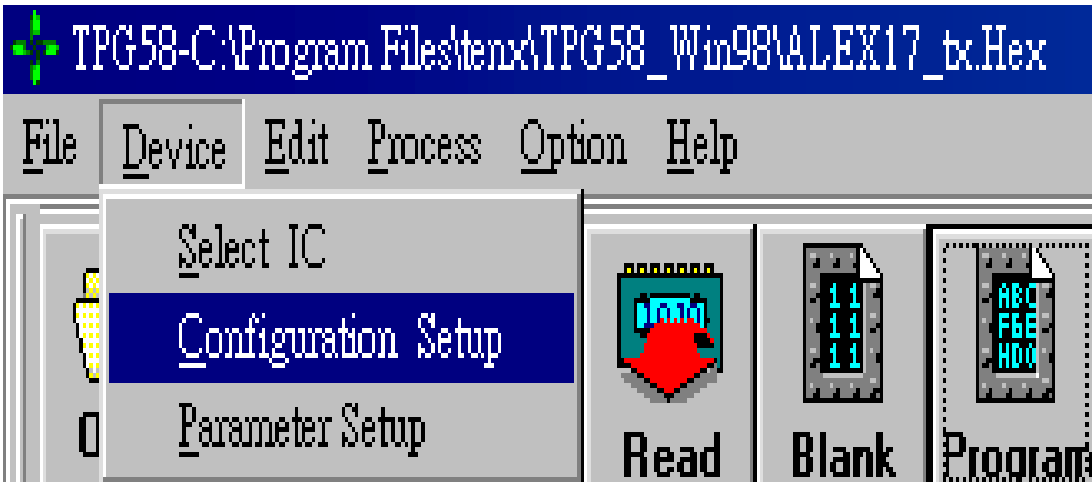
TM58 系列燒錄流程



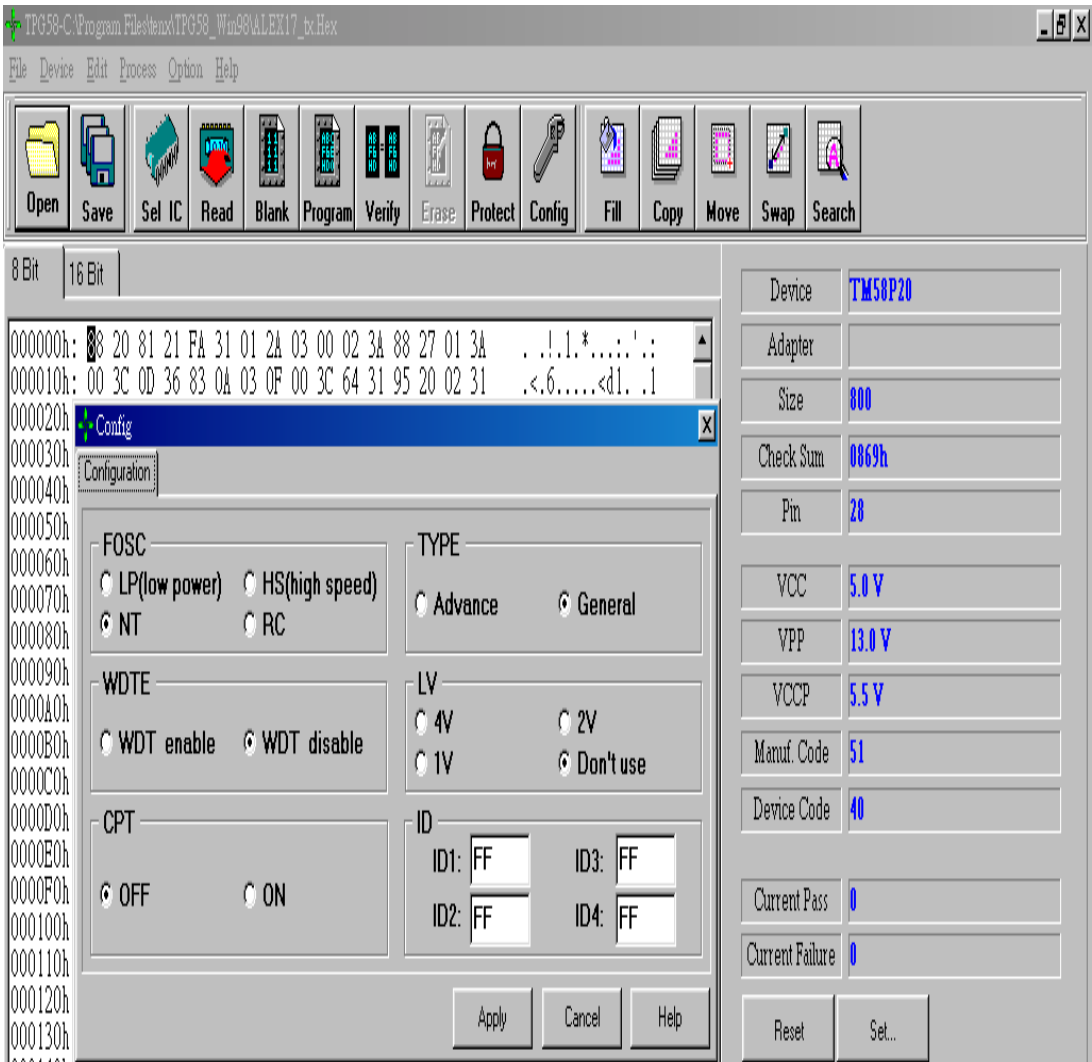
7. 開啟*.HEX 檔，將檔案暫存至 Memory buffer



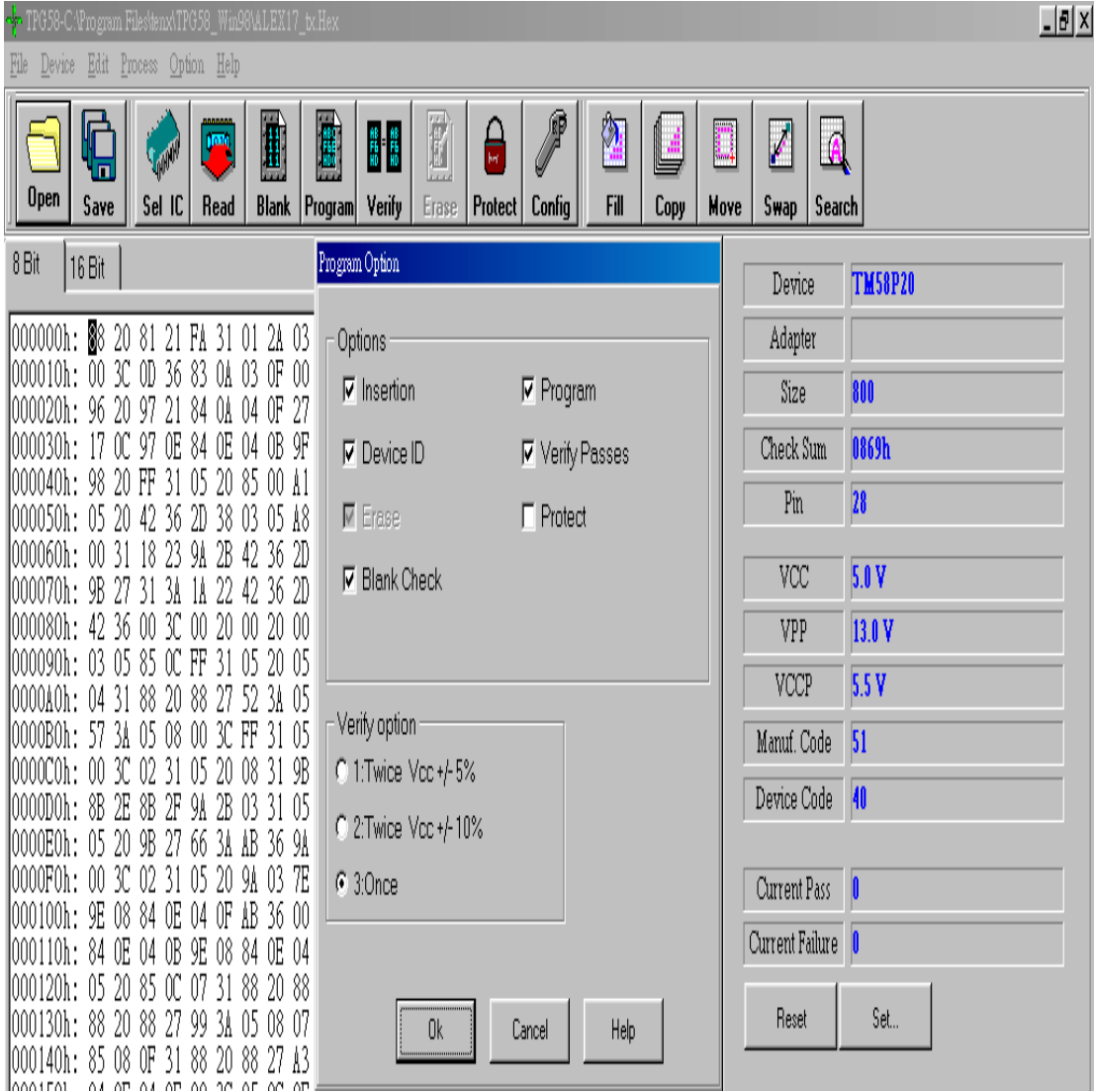
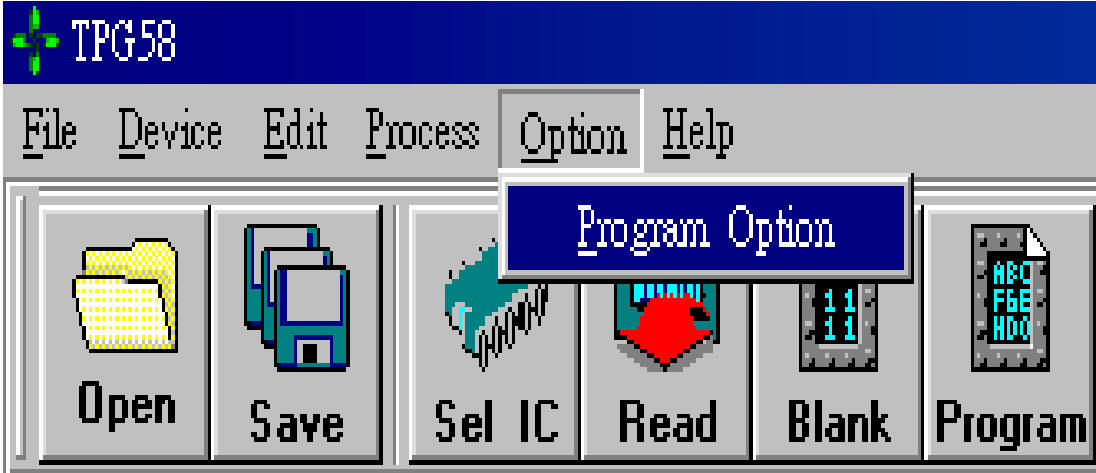
TM58 系列燒錄流程



8. 設定 Configuration



TM58 系列燒錄流程



TM58 系列燒錄流程

10. 燒錄程式

The screenshot displays the TPG58 software interface. The main window shows a memory dump with hexadecimal and ASCII data. A 'Programming...' dialog box is overlaid in the center, featuring a green progress bar at 35%. The background interface includes a menu bar (File, Device, Edit, Process, Option, Help), a toolbar with icons for Open, Save, Sel IC, Read, Blank, Program, Verify, Erase, Protect, Config, Fill, Copy, Move, Swap, and Search. On the right, a configuration panel lists device parameters: Device (TM58P20), Adapter, Size (800), Check Sum (0869h), Pin (28), VCC (5.0 V), VPP (13.0 V), VCCP (5.5 V), and various codes (51, 40). At the bottom, a status bar displays the following messages: 'READ Successful !!!', 'Device is Blank !!!', and 'Program Successful !!!'.

TM58 系列燒錄流程

11. 驗證比對

The screenshot displays the TP358 software interface. The main window shows a hex dump of memory data. A 'Verifying...' dialog box is overlaid on the center, featuring a green progress bar at 65%. The right-hand panel contains device configuration parameters for a TM58P20 device, including Adapter, Size (800), Check Sum (0869h), Pin (28), VCC (5.0 V), VPP (13.0 V), VCCP (5.5 V), and various codes (51, 40). The bottom status bar shows the following messages: 'READ Successful !!!', 'Device is Blank !!!', 'Program Successful !!!', and 'Verify Successful !!!'.

Device	TM58P20
Adapter	
Size	800
Check Sum	0869h
Pin	28
VCC	5.0 V
VPP	13.0 V
VCCP	5.5 V
Part Code	51
Device Code	40
Part Pass	0
Part Failure	0

READ Successful !!!
Device is Blank !!!
Program Successful !!!
Verify Successful !!!

TM58 系列燒錄流程

CONFIG (TM58P20 & TM58P10 & TM58P05)

Bit	Symbol	Description			
		Bit1	Bit0	OSC Type	Resonance Frequency
1~0	FOSC1~FOSC0	0	0	LS (low speed)	32~200Khz
		0	1	NS(Normal speed)	1~10Mhz
		1	0	HS (high speed)	10~20Mhz
		1	1	RC	32K ~ 6M Hz
2	WDTE	WDTE: Watchdog enable/disable control 1: WDT enable 0: WDT disable			
3	CPT	CPT: Code Protection bit 1: OFF 0: ON			
4	TYPE	TYPE: Select operating mode 1: Advanced mode 0: General mode			
6~5	LV1~LV0	LV1	LV0	Detect voltage	
		1	1	Don't use (No power consumption)	
		0	1	1V	
		1	0	2V (VDD=3V, Idd=0.6uA)	
		0	0	4V (VDD=5V, Idd=2.5uA)	